

TDPM Segment light

Inset LED light for Helipad

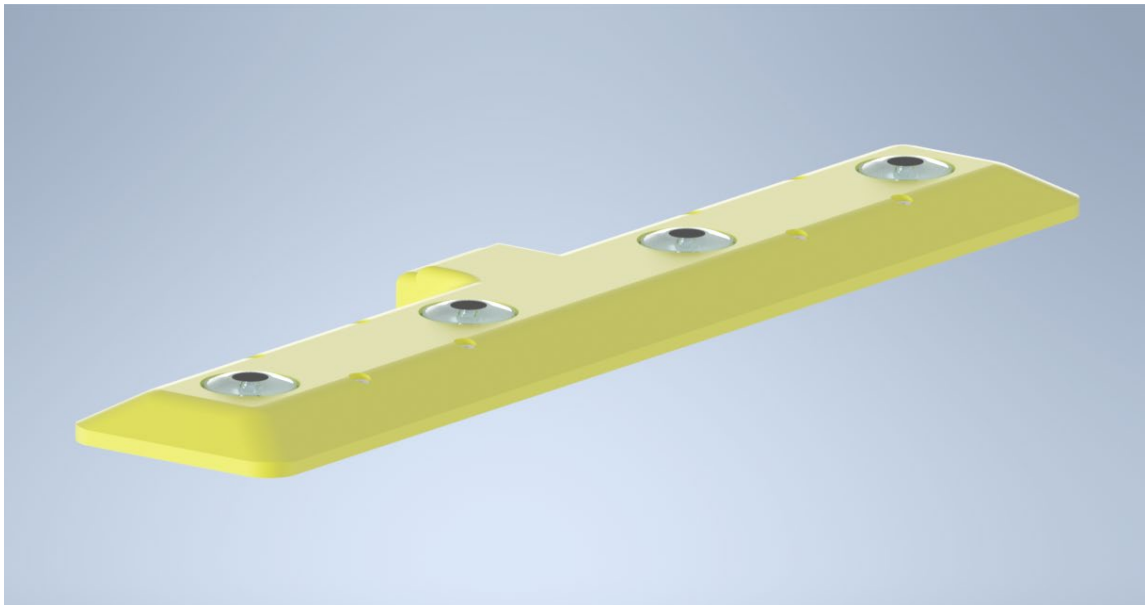
H lights

TD/PM

Circle lighting

ICAO

CAP

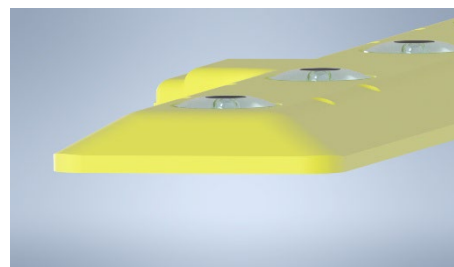


SUMMARY

Product summary:

TD/PM is a robust and very low projection LED light for Helipad. Designed in accordance with CAP437 and ICAO standard, this light is design to last. This product is designed for very high solicitation. With an increased static and dynamic load capacity, our product reduces the possibility of damage. The light is totally and perfectly waterproof, not for a limited period but for his whole lifetime! This light is the result of over 20 years of Aerolighting experience in the design and manufacture of aviation lighting. Its waterproofness, mechanical resistance, the care given to the photometry, the simplicity of the installation, the possibilities of digital control/monitoring make it the ideal product in most situations.

This lamp is made of aluminum (optional stainless steel), all screws and bolts are stainless steel. The LEDs, electronic components and all other components have been selected for their quality from leading manufacturers.



Design:	TD/PM Segment light
Material:	Aluminum or Stainless Steel
IP Rating:	IP 68
NVG Enhanced:	Integrated InfraRed
Projection:	Total: 19mm / glass: 2.65mm
DALI	Yes

Power supply	48 VDC
Power:	~5W
Standards:	ICAO, CAP437
Brightness ctrl.:	with LBR II DA or DALI
LED Lifetime:	> 100'000 hours
iControl Ready:	Yes

TECHNICAL DESCRIPTION:

Mechanical characteristics:

Body material:	Aluminum anodized or Stainless steel Impact resistant synthetic glass
length:	506 mm
Height above ground:	19.35 mm
Weight:	6.5 kg
Temperature range:	-35° to +50°C
Protection Class:	IP68
Water / Humidity: Insulation	WatBar – Physical insulation between the “connection room” and the light

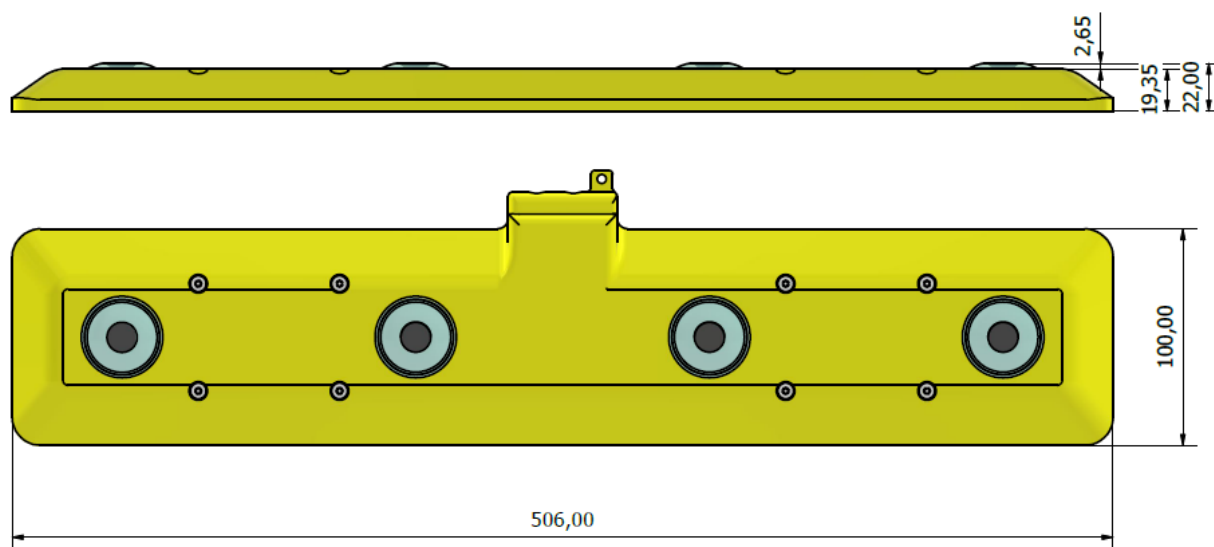
Optical characteristics: (visible)

Technology:	High Power LED
Light source:	Aerolighting TDx light engine
Available color:	Green/Yellow
Intensity:	AS CAP 437 (150%)
Intensity level:	from 5% to 100% with DALI 100% - 30% - 10% with LBR II DA
LEDs Lifespan:	>100'000 hours

Electrical characteristics:

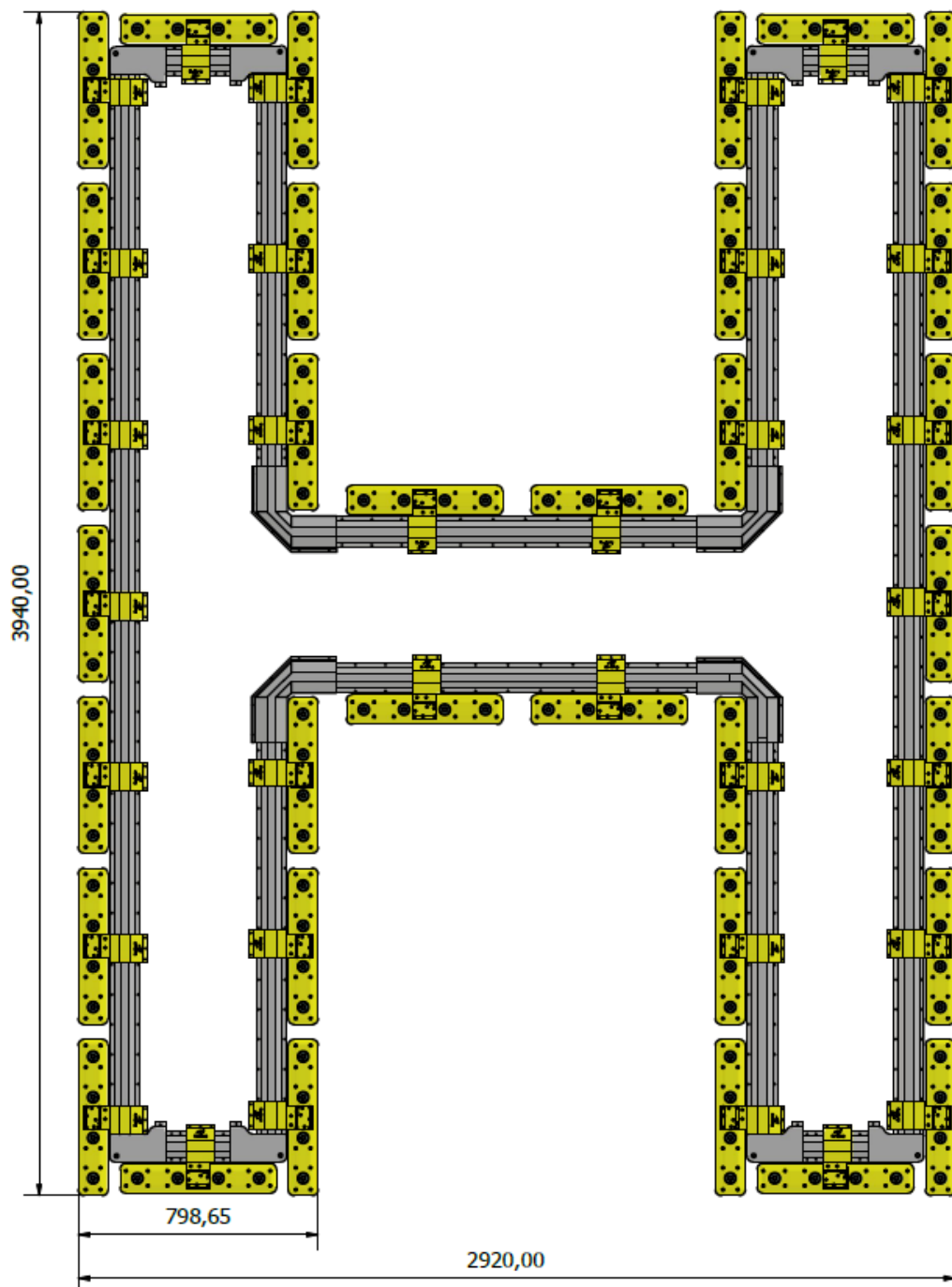
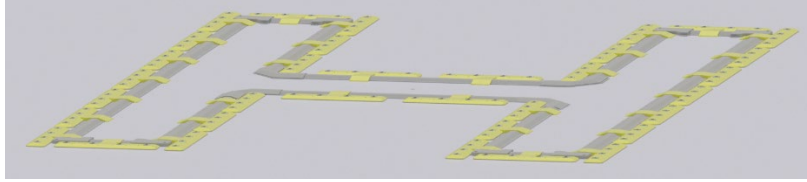
<i>Supply Voltage:</i>	48 Volts DC Automatic voltage drop (in line) compensation
<i>Power:</i>	Max 6 Watts
<i>Brightness regulation (visible):</i>	LBR II DA DALI (fully compatible with Digital Addressable Lighting Interface)
<i>Connection:</i>	+Vdc / -Vdc / DA / DA / PE (functional)
<i>Type of cable:</i>	LKM-HF 4G1 0,6/1 kV Offshore-compliant cable specification, delivered with fully assembled and vulcanized connector. 5x 1mm ²

DRAWING



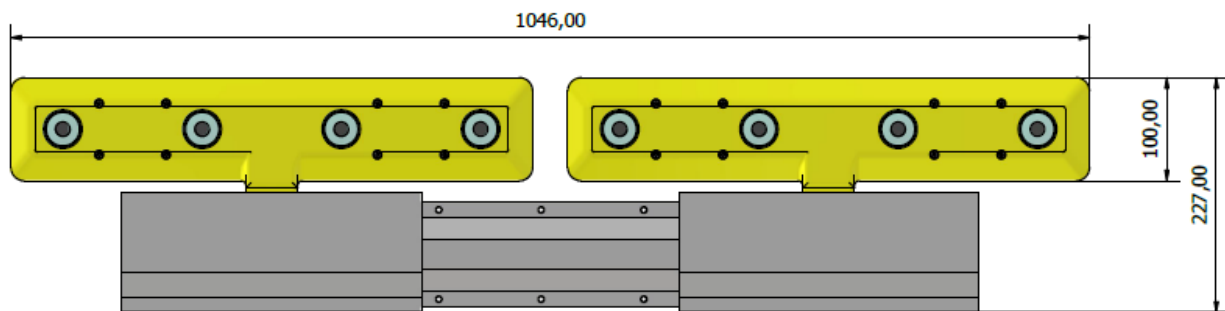
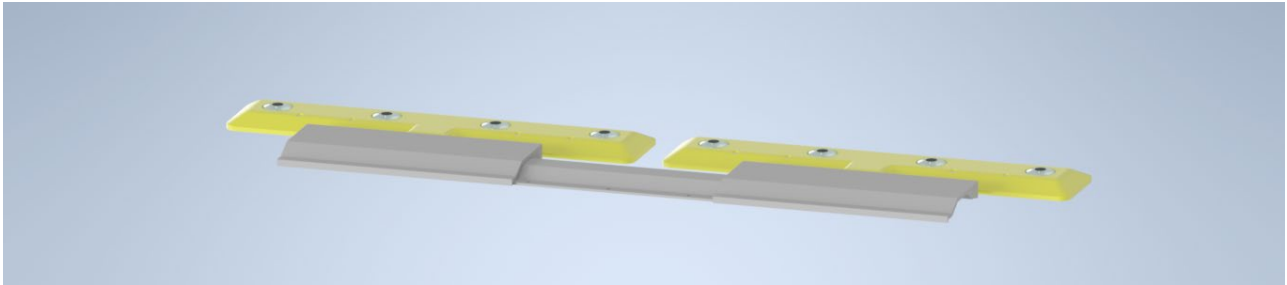
H typical configuration (as CAP)

- 4x3 meters: 34 segments



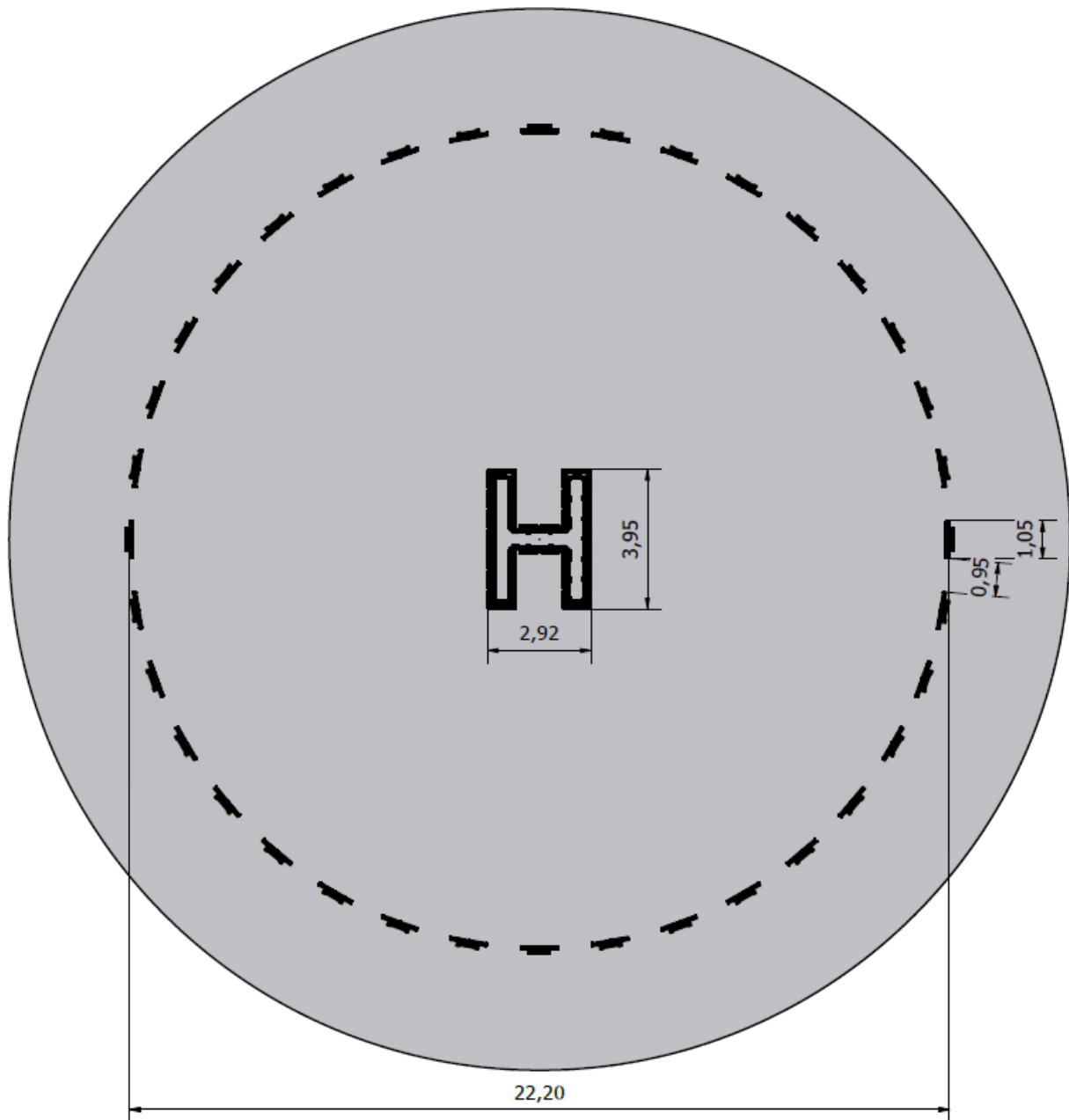
Circle double segment typical configuration

- 2 segments 1 meters



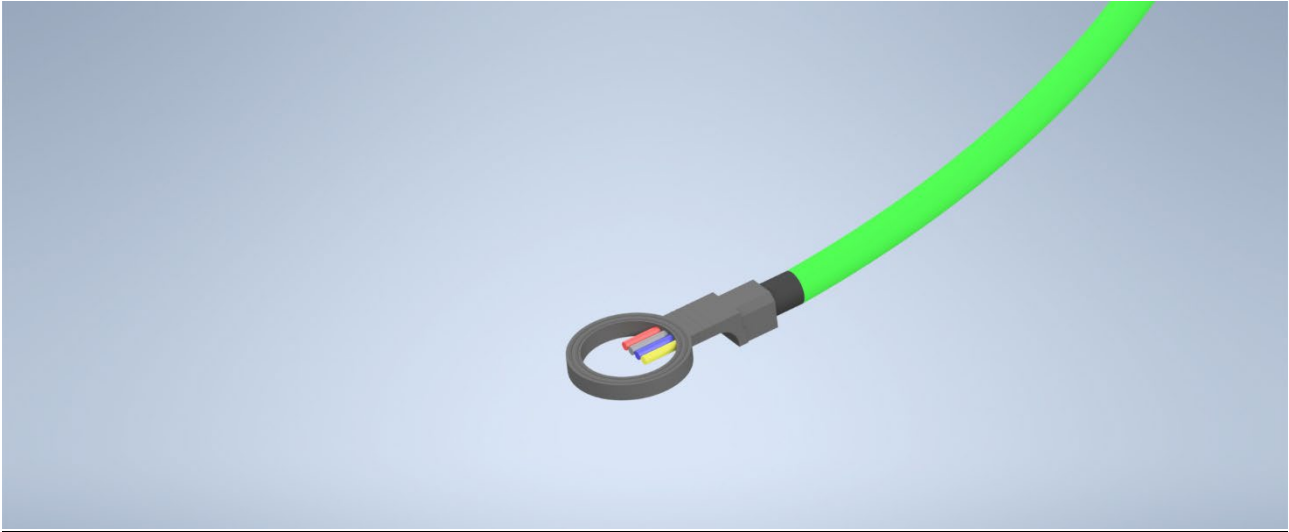
Circle and H typical configuration [22.2 meters]

- 36 double segment [72] circle – 34 segments H
- 106 segments

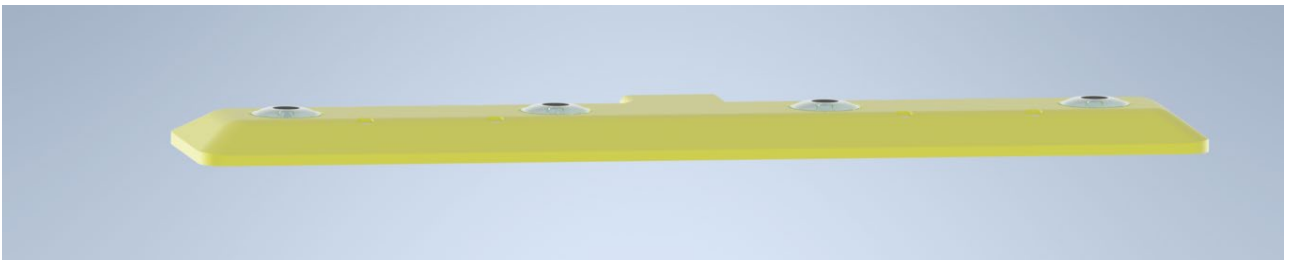
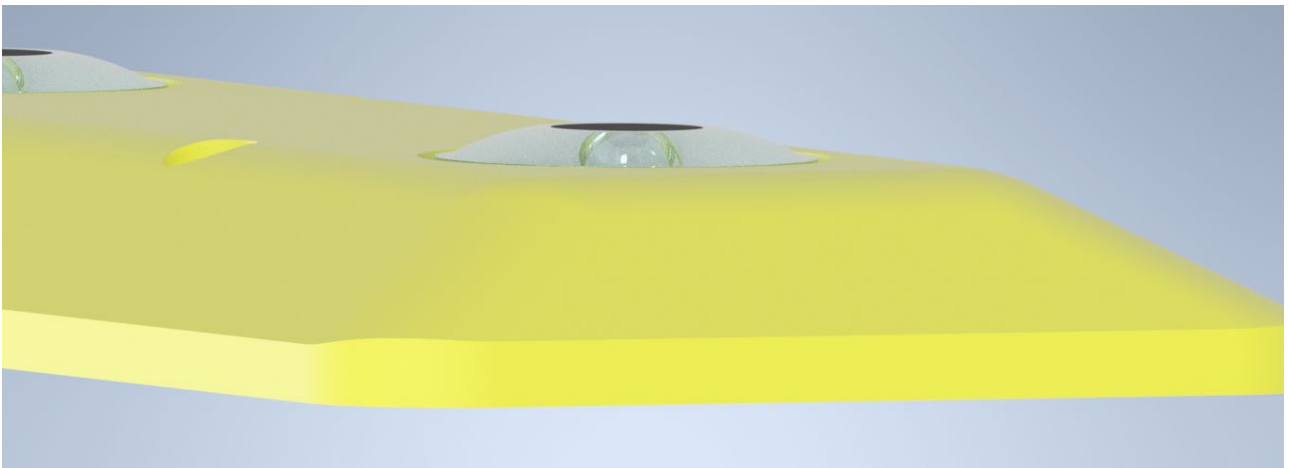


Connection details

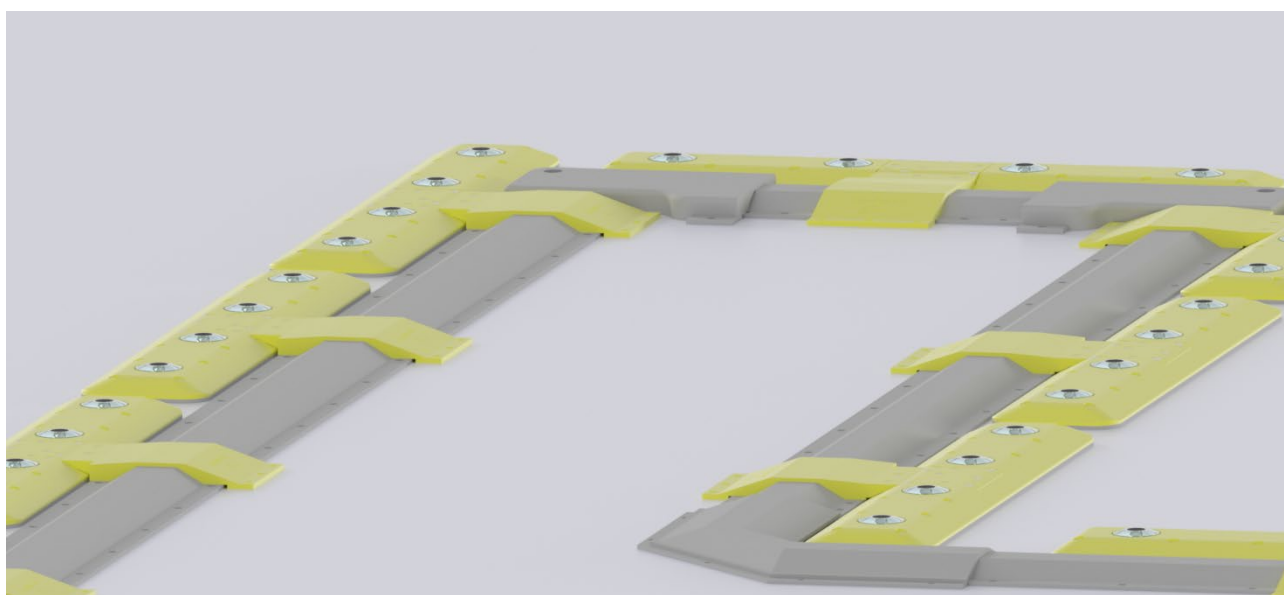
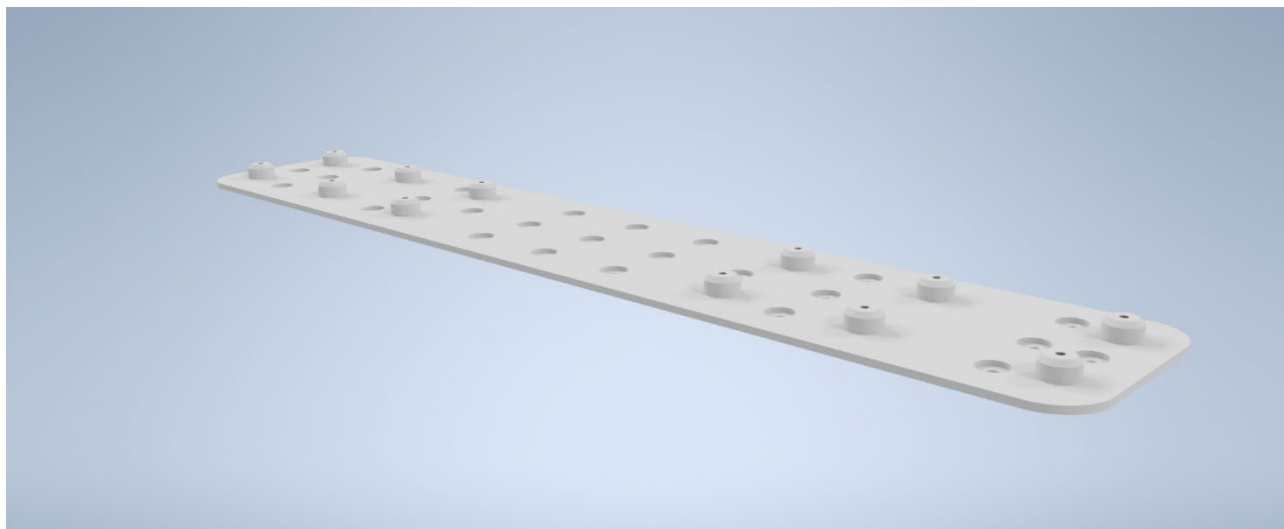
Fully vulcanized and molded connector assembly with offshore-specification-compliant cable



Glass produsion detail (2.6mm) with bumper



Fixing plate detail



The descriptions, photometric measurements and features contained in this publication are given for information only and do not constitute an engagement for our society, which reserves the right to change them without prior notification.