

8" adapter ring

150mm to 8 inches adapter ring

TLOF FATO Aiming point Flight path alignment Perimeter Taxiway edges
ICAO FAA CAP CASA DGAC-STAC



SUMMARY

Product summary:

The adapter ring allows the installation of 150mm lighting fixtures in a standard 8 inch base.

Simply attach the light to the adapter ring using the three screws provided, and then attach the ring to the base.

This kit is universal, so you don't have to replace the existing bases.



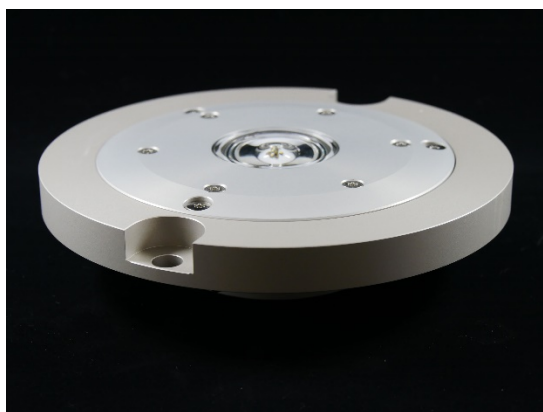
<i>Design:</i>	Adapter ring 150mm-8"
<i>Material:</i>	Aluminum or Stainless Steel
<i>Fixing:</i>	Screws

<i>Gasket</i>	Oring (included)
<i>Compatibility:</i>	All 150mm lights, all 8" bases
<i>Standards:</i>	ICAO, FAA, CAP, CASA, STAC

TECHNICAL DESCRIPTION:

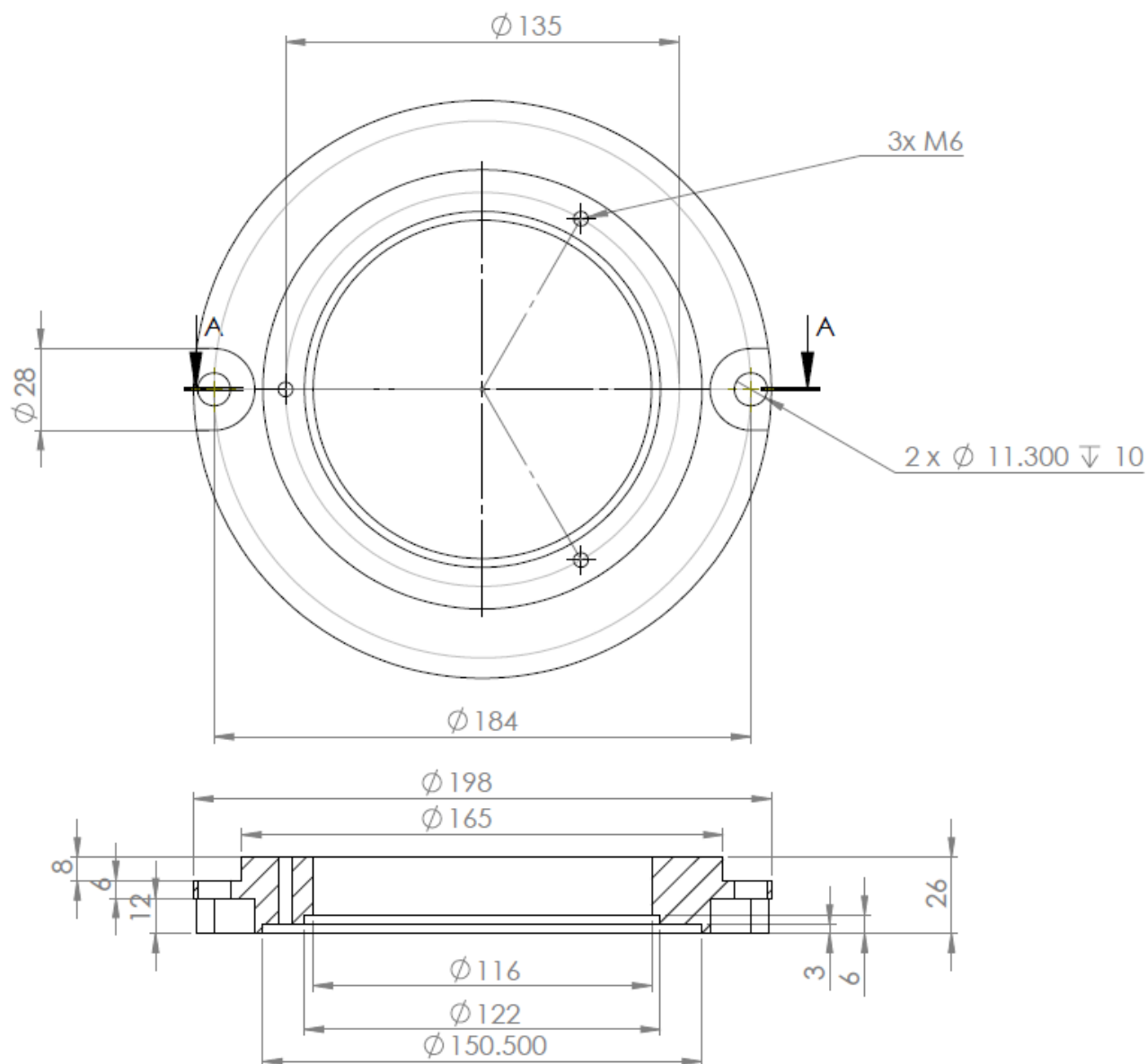
Mechanical characteristics:

<i>Body material:</i>	Aluminum anodized or Stainless steel
<i>Diameter:</i>	External: 198mm
<i>Height:</i>	26mm
<i>Weight:</i>	1.6 kg
<i>Fixing:</i>	2x M10/11 180°



8" adapter ring (install HELI light into standard 8 inches base)

DRAWING



The descriptions, photometric measurements and features contained in this publication are given for information only and do not constitute an engagement for our society, which reserves the right to change them without prior notification.