

FloodLed 4400

LED Floodlight for LED for Helipad

TLOF FATO Perimeter
ICAO FAA CASA DGAC-STAC



SUMMARY

Product summary:

The FloodLed 4400 has been designed specifically to meet the need for surface lighting on helipads. Lighting the surface with a FloodLed will help the pilot to obtain the right information about state and quality of surface. It will be easier to detect obstacles or objects present on the surface. This light will help to detect snow, sand, or other possible disagreements for pilots.

Our FloodLed 4400 is especially built to give a good reading of the quality of the terrain. The powerful narrow beam light will bring out details on the surface. The concept of the FloodLed 4400 guarantees the pilot not to be disturbed by the light.



Safety in case of impact is also guaranteed by the "aerolighting breakable coupling" which meets the current standards concerning frangibility.

<i>Design:</i>	Floodlight for Helipad	<i>Power supply:</i>	110~240VAC 48 VDC 6.6A with external driver
<i>Material:</i>	Aluminum or Stainless Steel	<i>Power:</i>	Max. 45W
<i>IP Rating:</i>	IP 66	<i>Brightness ctrl.:</i>	with LBR II DA or DALI
<i>Breakable coupling:</i>	Yes	<i>LED Lifetime:</i>	> 80'000 hours
<i>Projection:</i>	< 175 mm	<i>iControl Ready:</i>	Yes
<i>DALI</i>	Optional		

TECHNICAL DESCRIPTION:

Mechanical characteristics:

<i>Body material:</i>	Powder coated aluminum Borosilicate glass
<i>Diameter:</i>	Base plate 165mm
<i>Height above ground:</i>	Lower than <175 mm
<i>Weight:</i>	3.5 kg
<i>Temperature range:</i>	-35° to +50°C
<i>Protection Class:</i>	IP66

Optical characteristics: (visible)

Technology:	High Power LED
Light source:	Aerolighting Flood4400 LED engine
Available color:	White
Intensity (White):	Max. 20'000 candelas
Beam characteristics:	High power narrow beam
Intensity level:	100% - 30% - 10% with LBR II DA (optional) from 5% to 100% with DALI (optional)
LEDs Lifespan:	>80'000 hours

Electrical characteristics:

Supply Voltage:	110~240VDC 50/60hz 48 Volts DC
Power:	45 Watts
Brightness regulation (visible):	LBR II DA DALI (fully compatible with Digital Addressable Lighting Interface)
Connection:	110~240VDC 50/60hz : L/N (PE on base plate) 110~240VDC 50/60hz DALI : L/N/PE/DA/DA 48VDC : +Vdc / -Vdc / DA / DA
Type of cable:	110~240VDC 50/60hz : 2x1.5mm ² 110~240VDC 50/60hz DALI : 5x0.75mm ² 48VDC : 4x1.5mm ² (if DALI or LBR II DA is not used, only 2 wires are connected) Note: this light can be used only by connecting 48V without any regulation (only ON/OFF)

Aeronautical standards

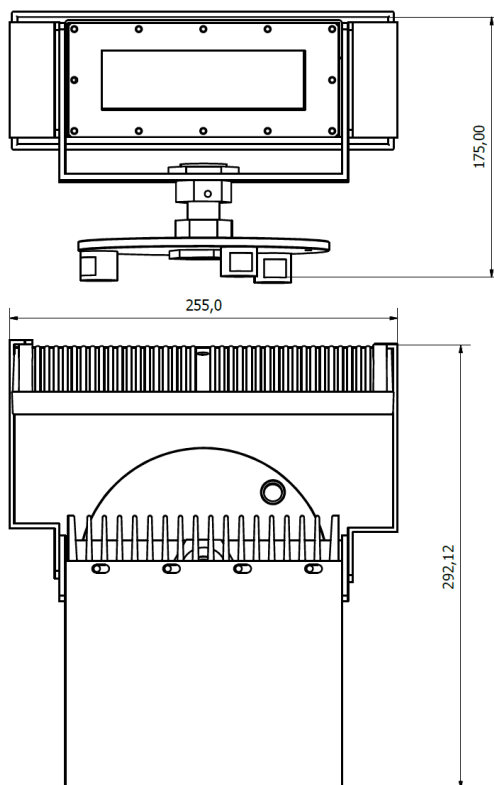
ICAO Annex 14 Vol II 5 th edition July 2020	TLOF perimeter lights Floodlighting Final approach and take off area lights (FATO) Floodlighting
EASA CS-HPT-DSN Issue 1 2019	TLOF perimeter lights Floodlighting Final approach and take off area lights (FATO) Floodlighting
CASA CAAP 92-2 (2) February 2014	TLOF perimeter lights Floodlighting Final approach and take off area lights (FATO) Floodlighting
FAA AC 150/5390-2C Apr 2012	Floodlighting
DGAC-STAC Version 4	Floodlighting

ORDERING CODE

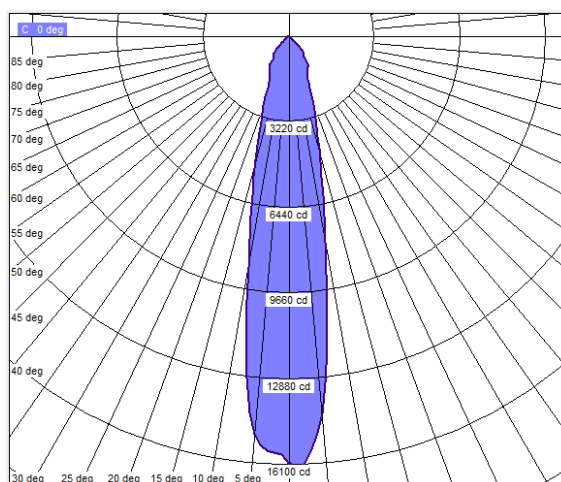
FloodLed 4400 B 230V – N

Type	Power	Control and monitoring
HeliX	-230V: 110~240VAC -48V: 48VDC -24V: 24VDC (LBR) <small>24V version not recommended for new design</small>	-N: No dimming / no DALI -DA: DALI / iControl

DRAWING



PHOTOMETRIC DATA



The descriptions, photometric measurements and features contained in this publication are given for information only and do not constitute an engagement for our society, which reserves the right to change them without prior notification.